

WANDA.EXCHANGE



/ PAYBITCOIN.IN.TH



**OFFERS: HOTELS / RESORTS**

\* EXCHANGE RATES | THB-USD | 19.06.2021

**PATTAYA**

**CENTARA GRAND PHRATAMNAK | 5\***

ASK FOR THE PRICE

**PHUKET**

PATONG :

**PHUVAREE RESORT | 4\***

17.491.424 USD

**BAAN BOA RESORT | 3\***

ASK FOR THE PRICE

KATHU :

**AYARA KAMALA RESORT & SPA**

31.802.590 USD

**BLUE OCEAN RESORT | 4\***

14.311.165 USD

**KRABI**

MUEANG KRABI :

**PHI PHI CHANG GRAND RESORT & SPA**

ASK FOR THE PRICE

KOH KLANG :

**ISLANDA HIDEAWAY RESORT | 4\***

5.088.414 USD

**KO CHANG**

**THE EMERALD COVE KOH CHANG | 5\***

57.245.662 USD



## CENTARA GRAND PHRATAMNAK



165  
ROOMS



POOL AND JACUZZI  
ON THE ROOF



WELLNESS  
CENTER



LARGE BALCONY  
/ TERRACE

Situated at the southern end of Pattaya at Phratamnak, Centara Grand Phratamnak Pattaya is a new luxury property under the Centara Grand brand.

This 5-star hotel is located only a few steps away from the beach and only a 10-minute drive from the heart of Pattaya.

Bangkok is within a 2-hour drive from the hotel. Also within easy reach are Bali Hai Pier, Hat Dongtan, and Wat Khao Phra Bat Pattaya. The hotel provides a stylish design with a dramatic marine-themed lobby, Italian furnishings, and a pool and Jacuzzi on the roof. Shuttle service to Pattaya's city center and transfer service to/from Suvarnabhumi Airport are also available.

Each room includes a flat-screen TV, Nespresso machine, a large balcony or terrace, refrigerator.



# / PATTAYA



NEAR  
THE BEACH



Pattaya is a popular Beach resort on the Gulf of Thailand, just 150 km southeast of Bangkok.







## **ROOM TYPES**

City / Ocean View

---

**Deluxe Suite |**

**Premium Deluxe |**

**Family Suite |**

**Junior Suite |**

---













## PHUVAREE RESORT | 4\*

2 -2 -8 0 RAI OF LAND



80  
ROOMS



1,98 km  
/ BEACH



OUTDOOR  
POOL



BALCONY  
TERRACE

Phuvaree Resort offers 80 rooms that embrace you with modern comforts. Each room has a private balcony where you can watch the watercolor sunset and the Varee swimming pool, a haven for relaxation, offering a 4-star hospitality service for guests who wish to discover the gentle beats of a long day night.

Comfort and peace These inspirations are coupled with impeccable accommodations created for a magnificent retreat that offers true comfort and recovery. Every element of the hotel, from stylish rooms, delicious international cuisine to a wide range of amenities, has been designed to create a warm and welcoming feeling for our valued guests.

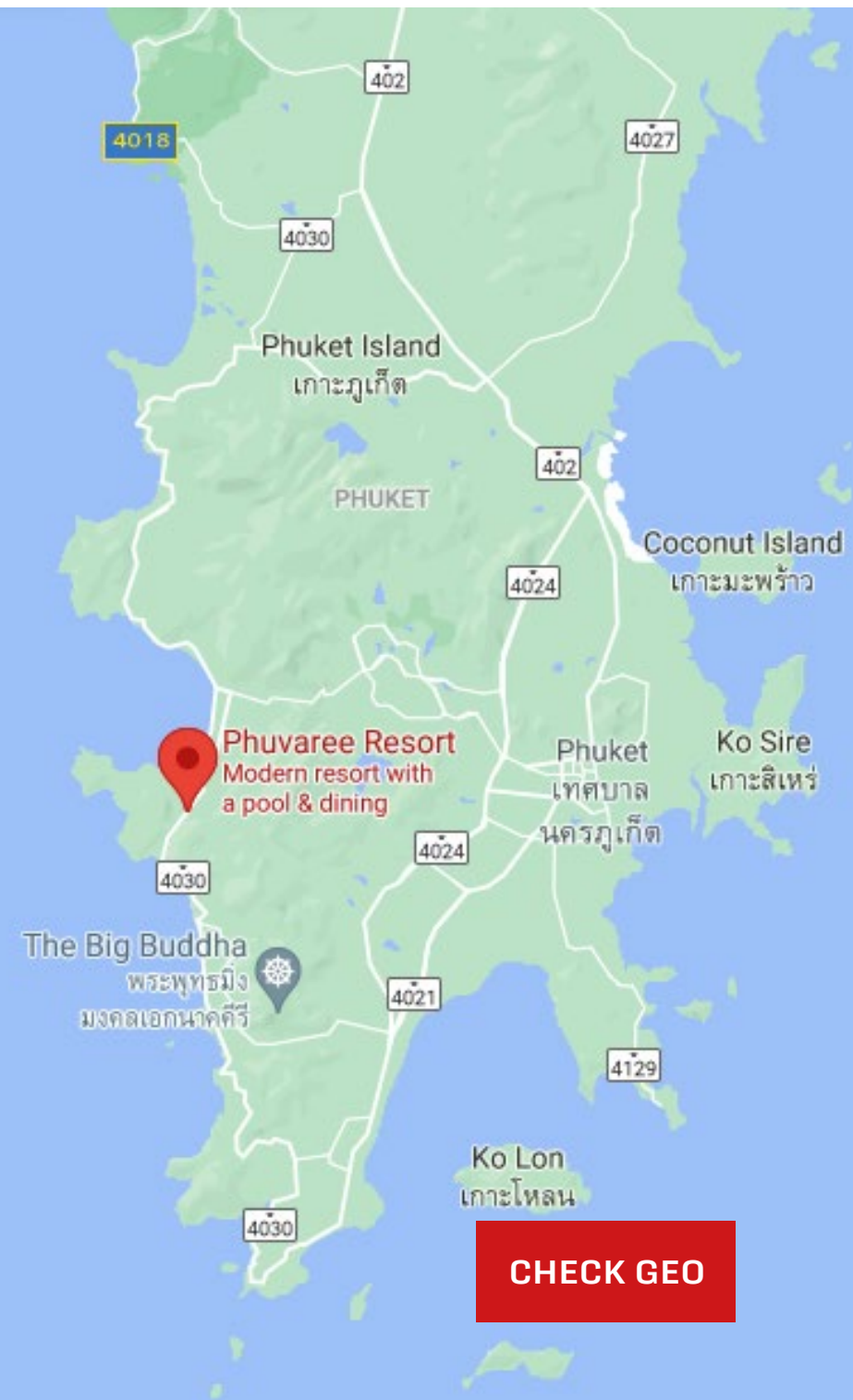
Phuvaree Resort is a great place to relax as we are located just minutes away from the famous beaches - Patong Beach and Karon Beach, ensuring our guests can experience the beauty of the island in every way.



## PATONG, PHUKET



Phuvaree Resort is an ideal place to relax as it is located just minutes from the famous beaches - Patong Beach and Karon Beach, ensuring guests can experience the beauty of the island.





## ROOM TYPES

---

**Deluxe Pool Room I**  
Double or Twin  
63 units  
34.50 sq. m

**Premier Pool Room I**  
Double or Twin  
17 units  
34.50 sq. m

---









## BAAN BOA RESORT | 3\*

1-0-56 RAI OF LAND



75  
ROOMS



50 m /  
BEACH



OUTDOOR  
POOL



BALCONY  
TERRACE

---

Located 3 m from Patong Beach, Baan Boa is features a restaurant and an outdoor spa pool. Rooms offer a private balcony with seating area. Wi-Fi access is available.

Just a 10-minute walk from Patong Shopping Mall, Baan Boa Resort is a 45-minute drive from Phuket International Airport.

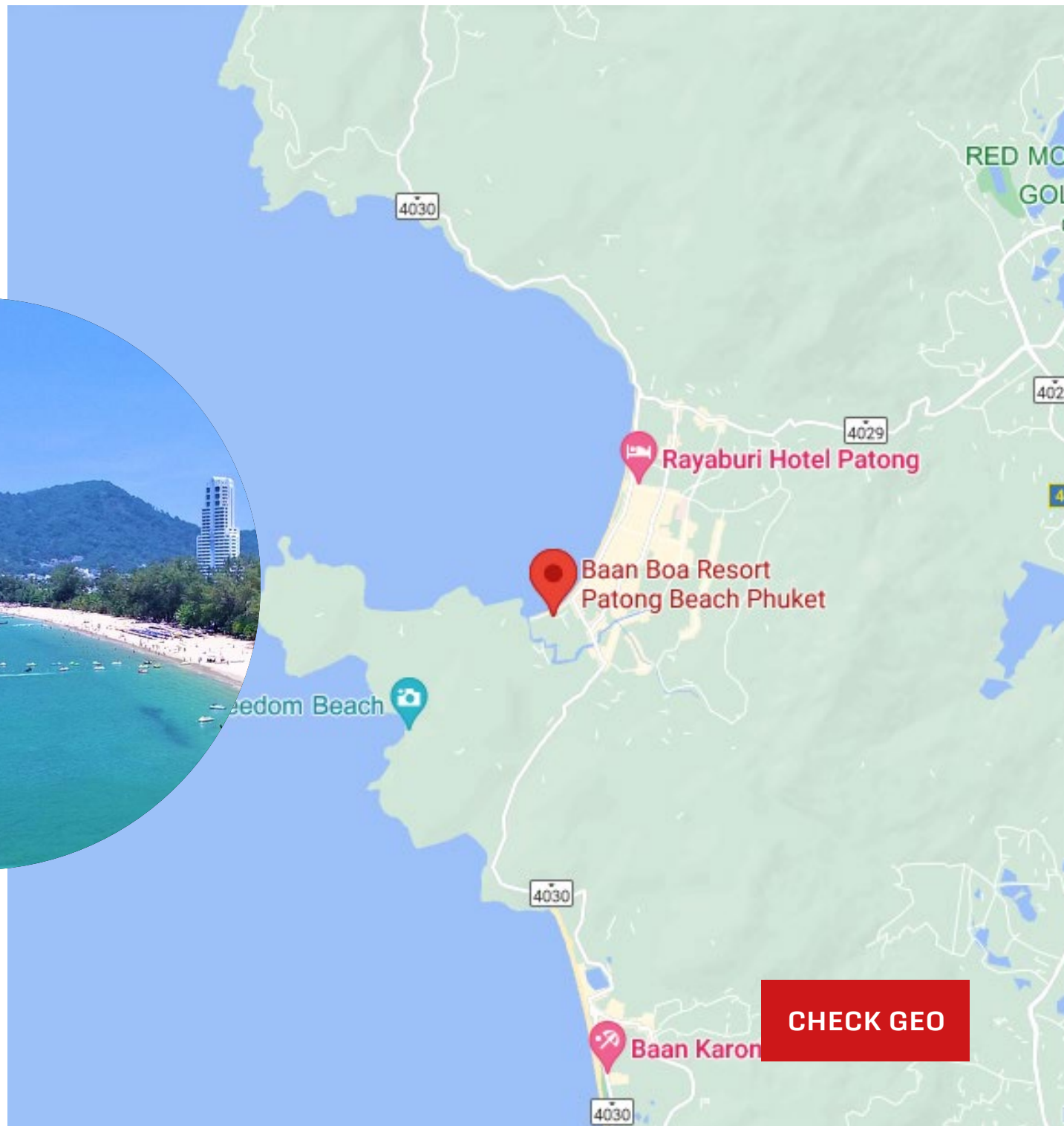
Rooms at the resort feature tiled flooring and a blend of modern and traditional Lanna Thai furnishings. Each air-conditioned room is equipped with cable TV and minibar. Some rooms offer pool or sea views. Room service is provided.

Guests may relax by Baan Boa Resort's sundeck or make travel arrangements at the tour desk. Parking is provided for free.

# PATONG, PHUKET



Its sandy, crescent beach is lined with cafes, restaurants and bars. The famously raucous nightlife scene features beer bars, go-go bars, nightclubs.







## ROOM TYPES

---

**Standart Room I**  
Double or Twin

**Superior Pool Room I**  
Double or Twin

**Delux Room I**  
Double or Twin

**Delux Pool Room I**  
Double or Twin

---













## AYARA KAMALA RESORT & SPA



FIRST RATE  
SPA



PANORAMIC  
SEA VIEW



SWIMMING  
POOL



CAR  
PARKING

Boasting stunning views of the Andaman Sea from stylish rooms, Ayara Kamala Resort offers luxurious stays with a first-rate spa and 5-star fitness facilities.

Ayara Kamala Resort & Spa occupies a prime hilltop location overlooking scenic Kamala Bay. Offering airport transfer service and a free beach shuttle, it is a 35-minute drive from Phuket International Airport.

Featuring spacious interiors, modern Thai-style rooms at Ayara Kamala feature light wood flooring and furnishings. They come with a comfortable seating area, a flat-screen TV and large bathroom with a bathtub.

Relax at the sauna or with a soothing Thai massage after an active workout at the tennis courts. Other leisure options include a well-equipped fitness centre and water sport activities.













## BLUE OCEAN RESORT | 4\*

1-2-47.9 RAI OF LAND



114  
ROOMS



430 m  
/ BEACH



OUTDOOR  
POOL



FITNESS  
CENTER

---

Blue Ocean Resort is located in central Kathu, close to Patong Beach and Bangla Night Street.

The hotel is situated on the paradisiacal island of Phuket, Thailand's largest island which is often referred to as the "Pearl of the Andaman" or the "Pearl of the South" and is only a 1 hour flight from Bangkok.

The incredible world famous Patong Beach is a short distance away. There is a bus that can take guests to the centre of Phuket where they can enjoy an abundance of activities and sites sure to enthrall the whole family.

The hotel is located in a quiet, but not isolated area, which has easy access to many of Phuket's charming attractions making it perfect whether you want to relax or explore. With its stunning location and beautiful accommodation the Blue Ocean Resort is the perfect holiday destination for all age groups.



## PATONG, PHUKET



48 min  
DRIVE



BALCONY  
TERRACE



AIR  
CONDITIONING

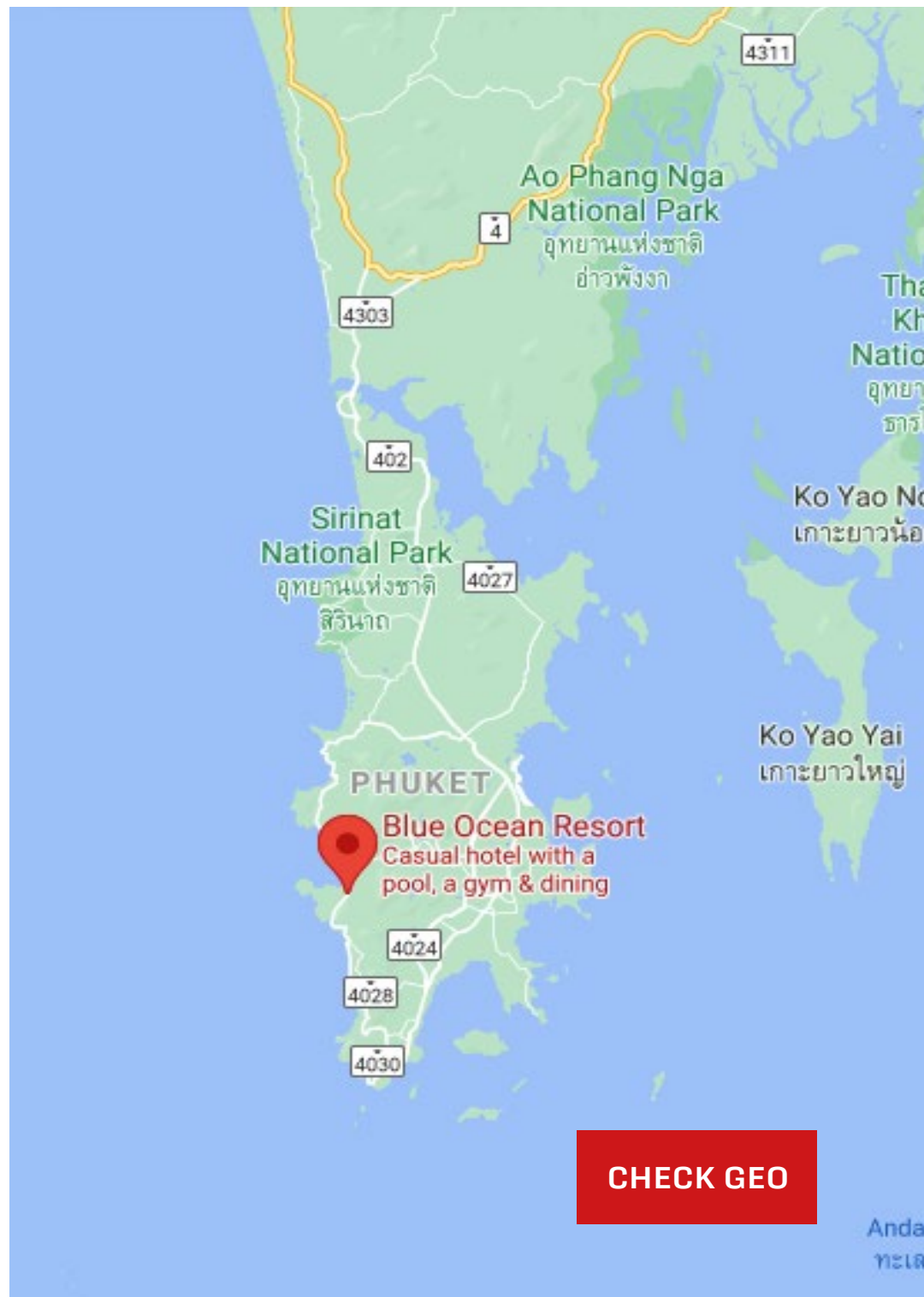


FREE  
WI-FI

Blue Ocean Resort offers 114 accommodations with minibars and safes. Rooms open to balconies. Each accommodation is individually furnished and decorated. Beds feature premium bedding. 42-inch LCD televisions come with cable channels. Refrigerators and coffee/tea makers are provided. Bathrooms include bathrobes, slippers, complimentary toiletries, and hair dryers.

This Patong resort provides complimentary wireless Internet access. Business-friendly amenities include desks and phones. Additionally, rooms include complimentary bottled water and blackout drapes/curtains. In-room massages and irons/ironing boards can be requested. Housekeeping is provided daily.

An outdoor pool and a children's pool are on site. Other recreational amenities include a fitness center. The recreational activities listed below are available either on site or nearby; fees may apply.







## ROOM TYPES

---

**Grand Deluxe Pool I**  
11 rooms

**Grand Delux Room I**  
20 rooms

**Superior Room I**  
5 rooms

**Deluxe Room I**  
78 rooms

---













## ISLANDA HIDEAWAY RESORT | 4\*

### WITH 29 BUNGALOWS

---

Islanda Hideaway Resort With an area of approximately **20 rai**, built on the vision of a peaceful retreat where truly feels relaxed. Resting place. This serene, delicately woven fabric on the fabric of the environment. Natural surrounding of Koh Klang and give importance to ecological concepts and local communities.

Our twenty-nine spacious bungalows are inspired by southern Thai culture. Its simplicity and taste are kept in mind while ignoring. Modern facilities that provide comfort and convenience, Islanda creatures will be the perfect place for time to depress for a romantic honeymoon. Newlyweds are places to relax, couples for relaxation to connect, or time with family to relax and explore.

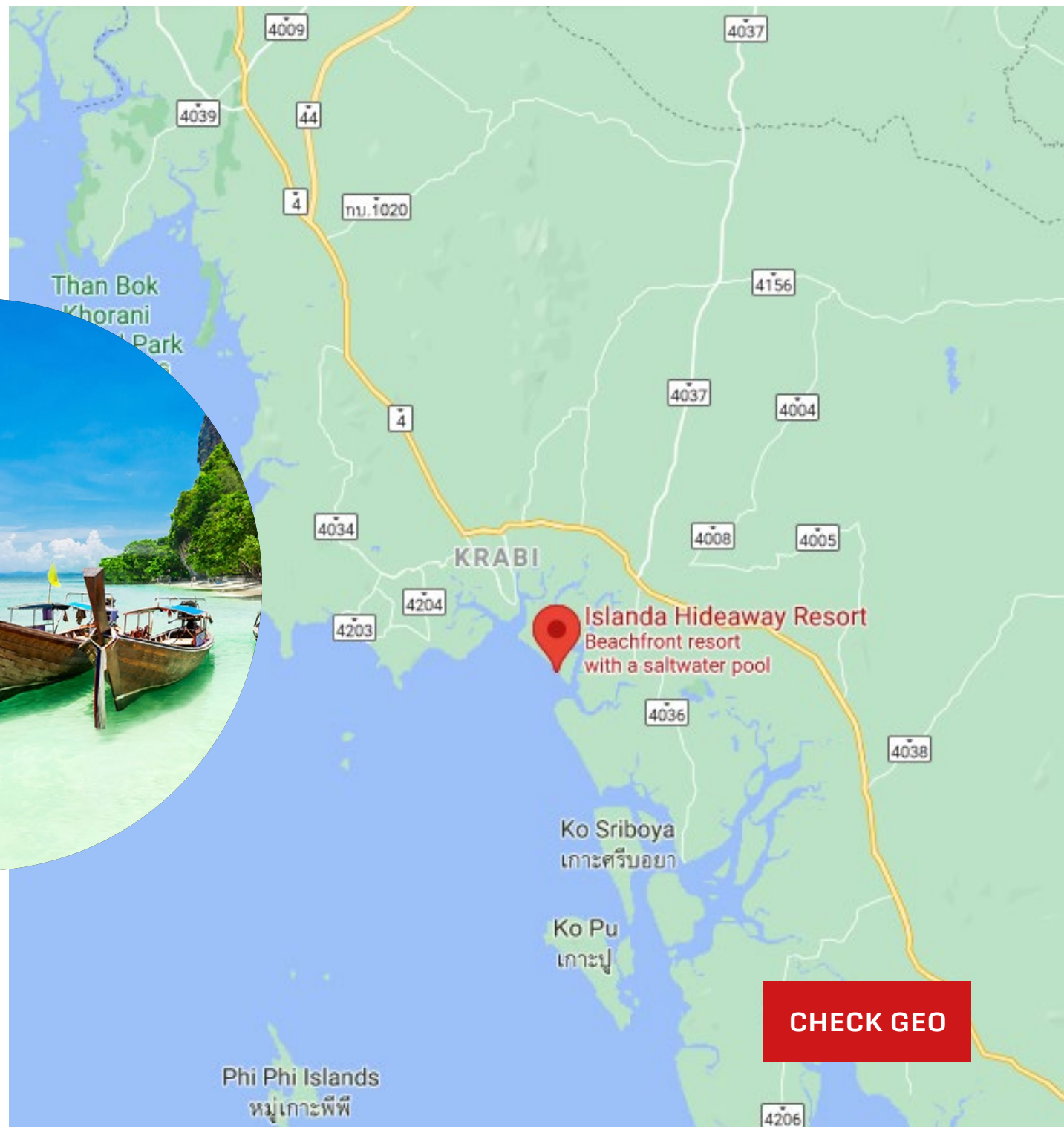
The central island is **surrounded by sea, salt water canals and vast ancient mangrove forests** which combine into an internationally known wetland ecosystem connecting the mainland Krabi and the open sea. You will enjoy traveling along a small stream. Deep in the mangrove forest while observing the life of local fishermen, admire beautiful birds, reptiles and fish.



## KOH KLANG, KRABI



Traveling around the island is a «must» journey in Krabi. This is a picture of the «Andaman Sea» that everyone has long dreamed of.



**CHECK GEO**





The design of the bungalows at the Islanda Hideaway Resort is inspired by traditional Thai houses combined with the work of a fishing village in southern Thailand. Each bungalow has two modules, onto a large balcony.

The first room is an air-conditioned master bedroom that opens onto a large balcony. The second room is a multipurpose room connected to the bathroom with an open roof shower that allows you to relax under the open sky.

Twenty-nine bungalows arranged in three rows along the coastline. All Andaman are built on tall stilts with very high ceilings to catch the sea breeze while avoiding the heat. The open-air terrace has ample space for semi-outdoor activities such as listening to your favorite music, following the best-selling author, or simply just Lean back and close your eyes













## PHI PHI CHANG GRAND RESORT & SPA



PANORAMIC  
SEA VIEW



SWIMMING  
POOL



SPA  
CENTER



TERRACE  
BALCONY

---

Surrounded by greenery, Phi Phi Chang Grand Resort is a 5-minute walk to Ao Lodalum. Guests can enjoy diving as well as a relaxing massage.

Phi Phi Chang Grand Resort & Spa offers **30 air-conditioned accommodations** with refrigerators and safes. Rooms open to balconies. LCD televisions come with satellite channels. This Ko Phi Phi resort provides complimentary wireless Internet access.

The resort is a 10-minute walk to Tonsai Bay. Phuket is a 2-hour ferry ride away.



# PHI PHI ISLAND



**KRABI : 45,7 KM**  
**PHUKET: 66,1 KM**

One of the most popular tourist island in Thailand!



**CHECK GEO**















## THE EMERALD COVE KOH CHANG HOTEL



PANORAMIC  
SEA VIEW



SWIMMING  
POOL



SPA  
CENTER

---

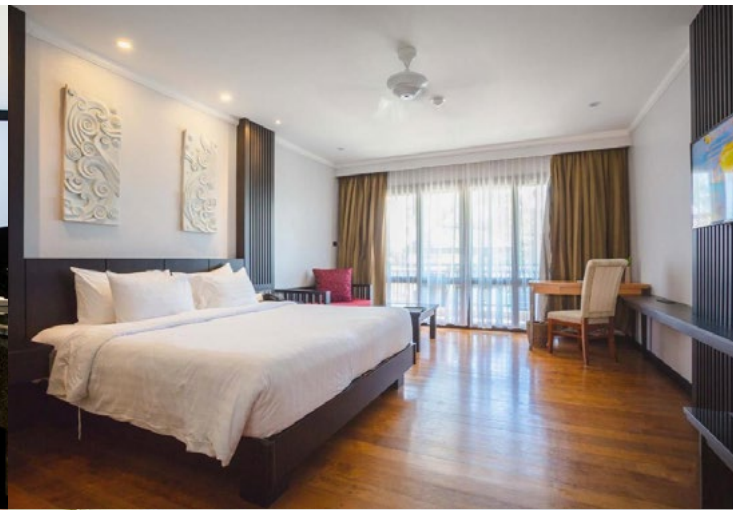
Boasting an outdoor pool with stunning views of the ocean, Emerald Cove Koh Chang is located just a few steps away from the private beach. Free WiFi, a spa and a fitness centre are also on offer here.

All rooms are air conditioned and equipped with a flat-screen TV with satellite channels and a refrigerator. Guests can grab a drink from the minibar and sit out on the furnished balcony. The private bathroom comes with bathrobes, a bathtub and free toiletries.

Featuring spacious interiors, modern Thai-style rooms at Ayara Kamala feature light wood flooring and furnishings. They come with a comfortable seating area, a flat-screen TV and large bathroom with a bathtub.

The hotel is 5.6 km from Kai Bae Beach, 8.5 km from Koh Chang National Park and 16 km from White Sand Beach.





**ROOM TYPES**









**MACAO CLUB**



**THE COVE TERRACE**

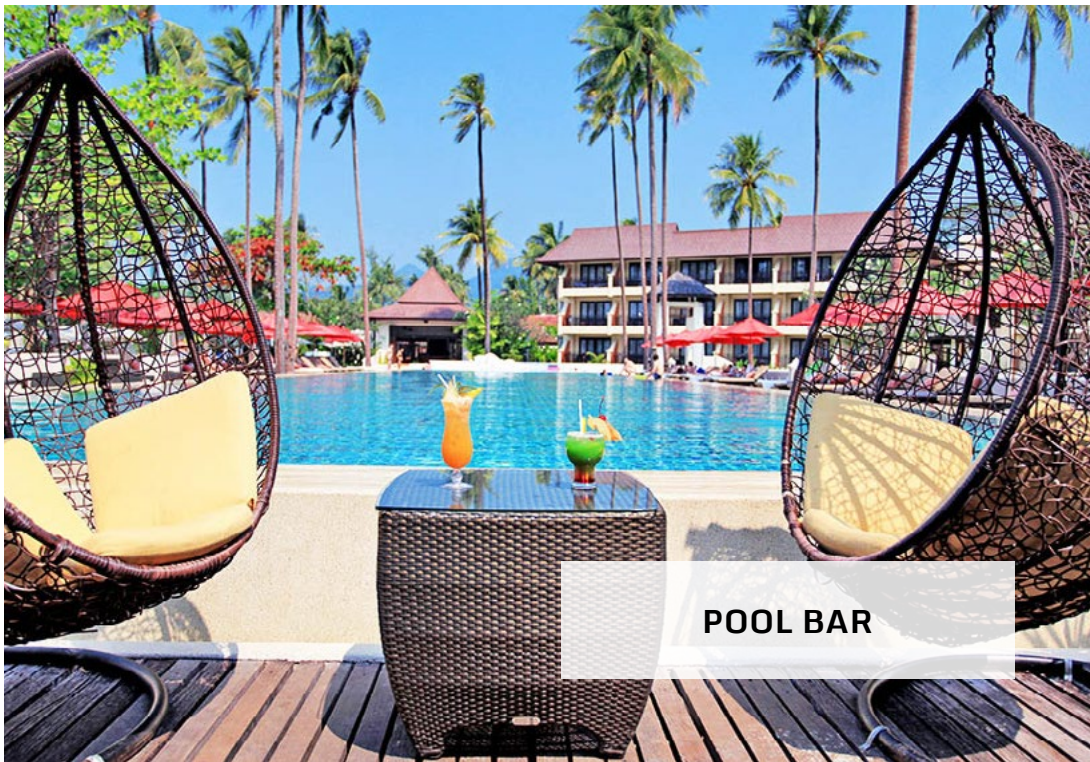


**THAI RESTAURANT**



**24H ROOM SERVICE**





**POOL BAR**



**BEACH DINNER**



**BALCONY DINNER**



**24H ROOM SERVICE**



/ PAYBITCOIN.IN.TH

**THANK YOU!**

---

CONTACT: DIEGO@WANDA.EXCHANGE | +66 96 713 7877

**WANDA.EXCHANGE**

**Wanda.Exchange Company Limited**

No. 99/47 Village No. 13  
Nongprue, Banglamung  
20150 Chonburi / Thailand

